

© International Baccalaureate Organization 2022

All rights reserved. No part of this product may be reproduced in any form or by any electronic or mechanical means, including information storage and retrieval systems, without the prior written permission from the IB. Additionally, the license tied with this product prohibits use of any selected files or extracts from this product. Use by third parties, including but not limited to publishers, private teachers, tutoring or study services, preparatory schools, vendors operating curriculum mapping services or teacher resource digital platforms and app developers, whether fee-covered or not, is prohibited and is a criminal offense.

More information on how to request written permission in the form of a license can be obtained from <https://ibo.org/become-an-ib-school/ib-publishing/licensing/applying-for-a-license/>.

© Organisation du Baccalauréat International 2022

Tous droits réservés. Aucune partie de ce produit ne peut être reproduite sous quelque forme ni par quelque moyen que ce soit, électronique ou mécanique, y compris des systèmes de stockage et de récupération d'informations, sans l'autorisation écrite préalable de l'IB. De plus, la licence associée à ce produit interdit toute utilisation de tout fichier ou extrait sélectionné dans ce produit. L'utilisation par des tiers, y compris, sans toutefois s'y limiter, des éditeurs, des professeurs particuliers, des services de tutorat ou d'aide aux études, des établissements de préparation à l'enseignement supérieur, des fournisseurs de services de planification des programmes d'études, des gestionnaires de plateformes pédagogiques en ligne, et des développeurs d'applications, moyennant paiement ou non, est interdite et constitue une infraction pénale.

Pour plus d'informations sur la procédure à suivre pour obtenir une autorisation écrite sous la forme d'une licence, rendez-vous à l'adresse <https://ibo.org/become-an-ib-school/ib-publishing/licensing/applying-for-a-license/>.

© Organización del Bachillerato Internacional, 2022

Todos los derechos reservados. No se podrá reproducir ninguna parte de este producto de ninguna forma ni por ningún medio electrónico o mecánico, incluidos los sistemas de almacenamiento y recuperación de información, sin la previa autorización por escrito del IB. Además, la licencia vinculada a este producto prohíbe el uso de todo archivo o fragmento seleccionado de este producto. El uso por parte de terceros —lo que incluye, a título enunciativo, editoriales, profesores particulares, servicios de apoyo académico o ayuda para el estudio, colegios preparatorios, desarrolladores de aplicaciones y entidades que presten servicios de planificación curricular u ofrezcan recursos para docentes mediante plataformas digitales—, ya sea incluido en tasas o no, está prohibido y constituye un delito.

En este enlace encontrará más información sobre cómo solicitar una autorización por escrito en forma de licencia: <https://ibo.org/become-an-ib-school/ib-publishing/licensing/applying-for-a-license/>.

Environmental systems and societies
Standard level
Paper 1 – resource booklet

Friday 28 October 2022 (afternoon)

1 hour

Instructions to candidates

- Do not open this booklet until instructed to do so.
- This booklet contains all the resources to answer paper 1.

Figure 1(a): World map showing location of Japan

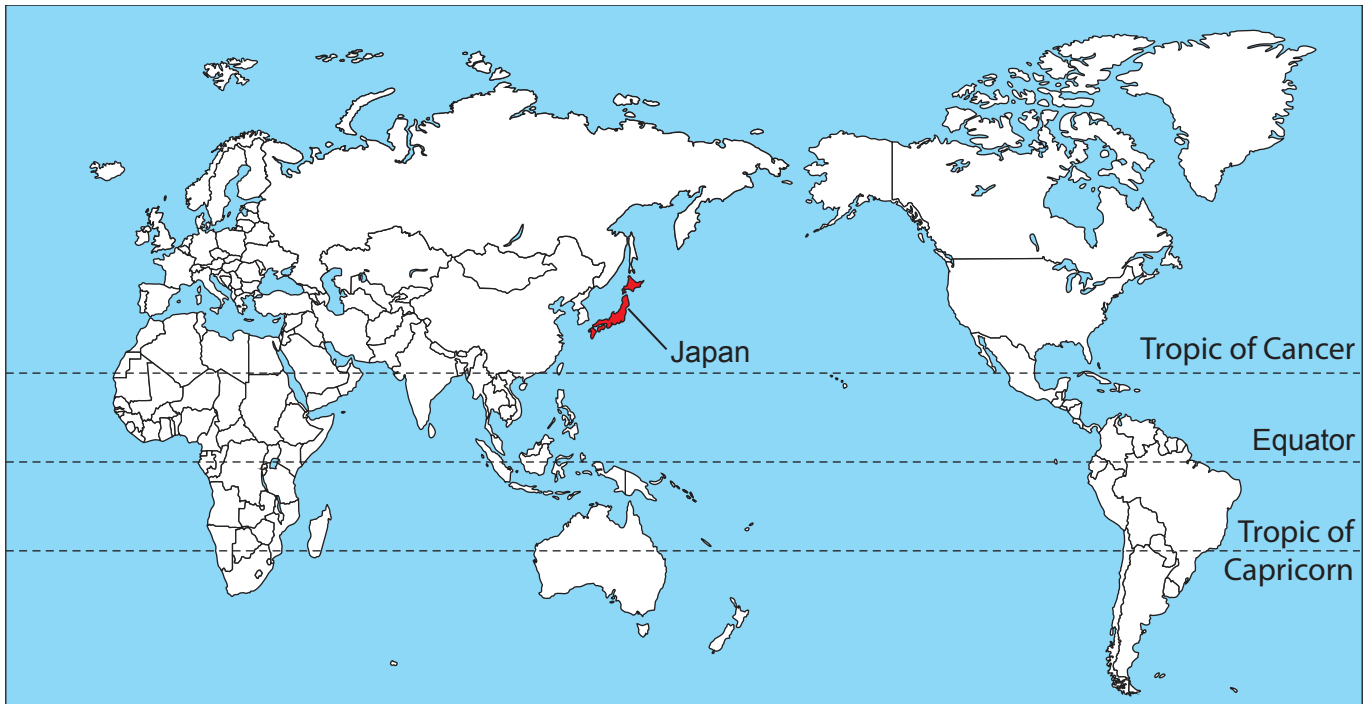


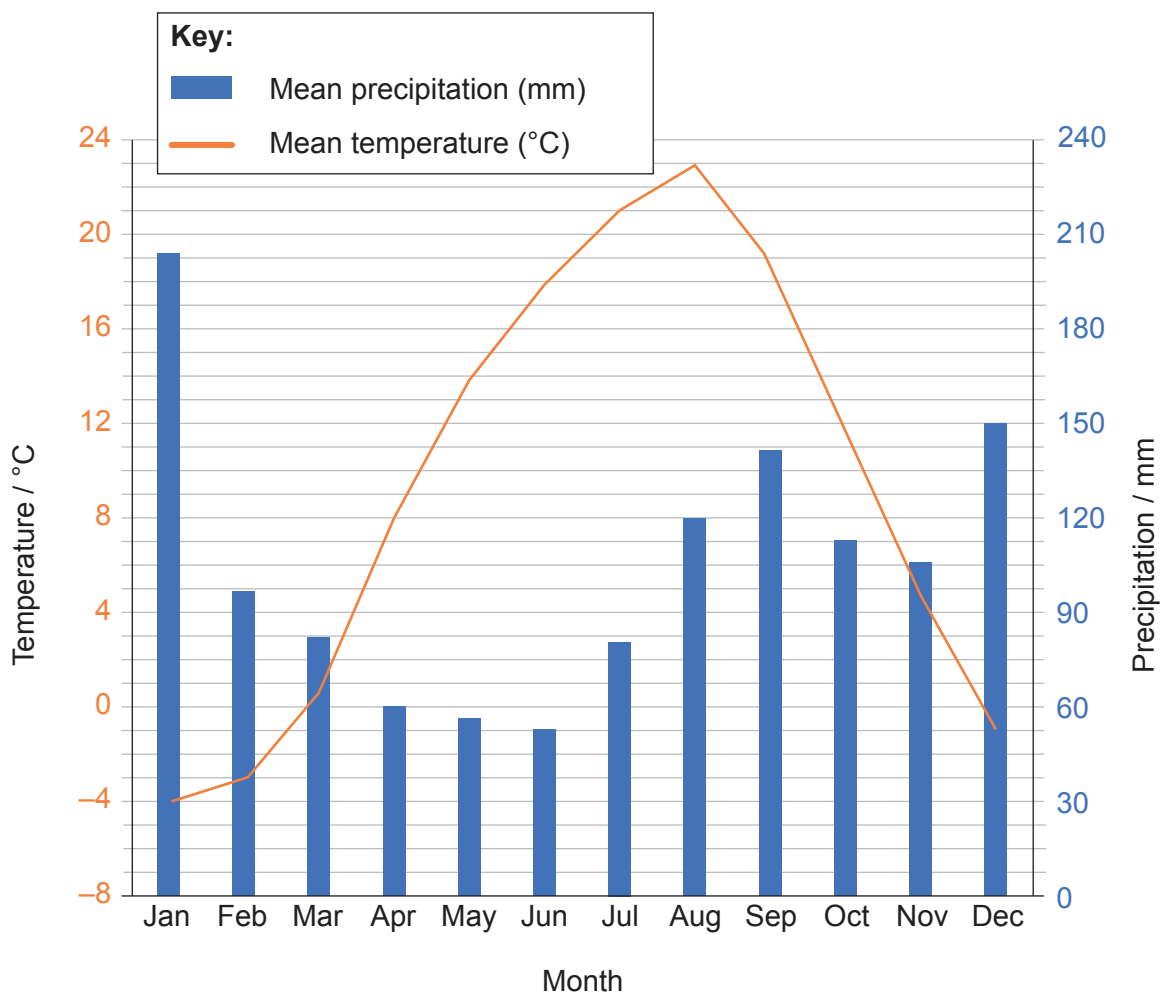
Figure 1(b): Map showing location of the island of Hokkaido



Figure 2(a): Fact file on the island of Hokkaido

- The main city is Sapporo.
- The island contains 20 % of Japan's land area.
- The population is 5 286 000 (2018), which represents 5 % of Japan's population.
- 31 % of the inhabitants are over the age of 65 years (2018).
- It is home to the indigenous Ainu people.
- It is Japan's largest producer of rice, soybeans and wheat.
- It is known for nature and recreational tourism, e.g. hiking, bear-watching.
- It has 198 ski resorts.
- It receives over two million national tourists each year.

Figure 2(b): Climate graph for Sapporo, Hokkaido



Turn over

Figure 2(c): Elevation map of the island of Hokkaido

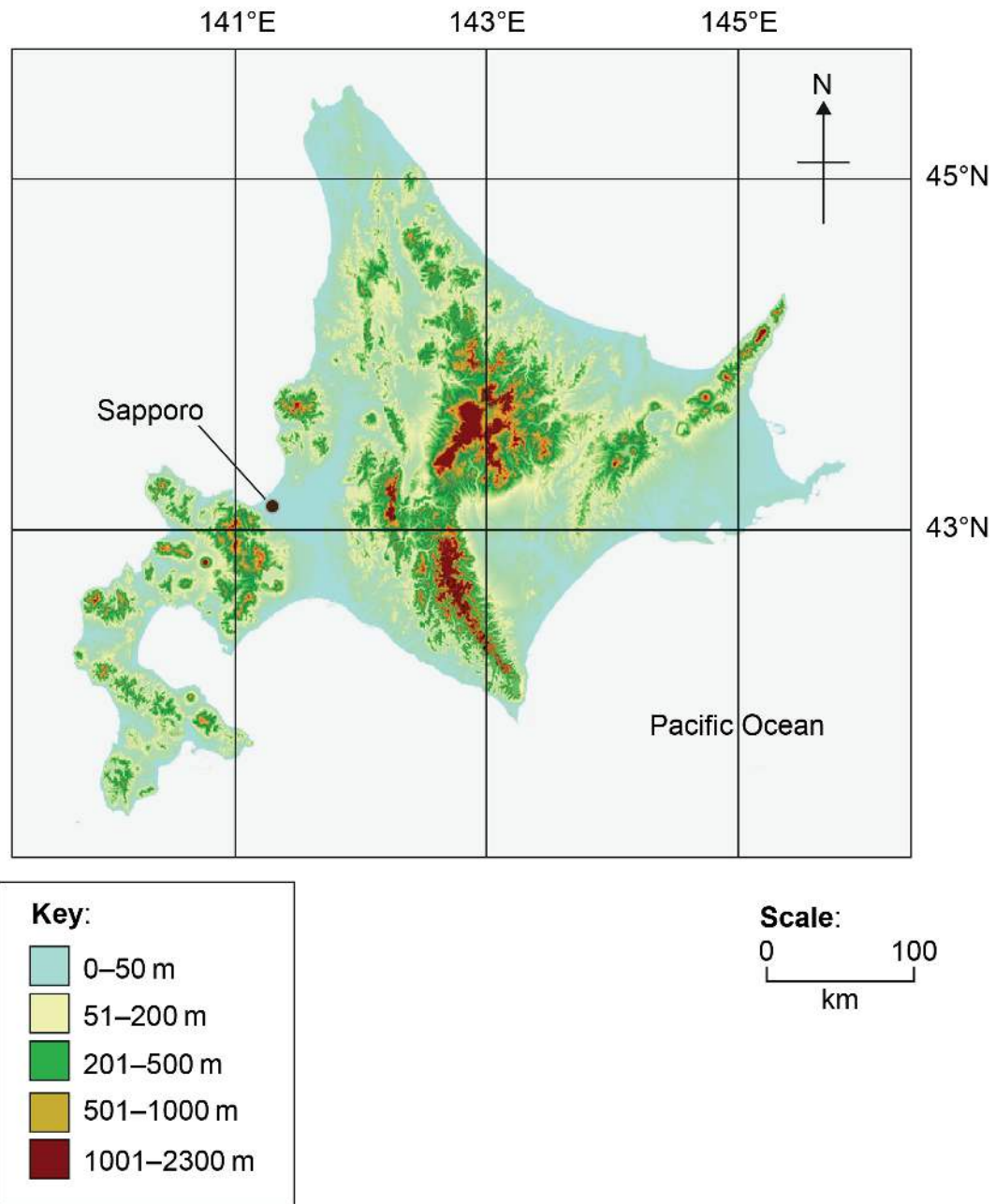


Figure 3(a): Fact file on the island of Hokkaido's national parks

- Hokkaido has six of Japan's 34 national parks.
- 10% of the land area is protected.
- Many birds, amphibians, butterflies and mammals are endemic subspecies.
- Approximately 25% of hiking trails in the two most popular national parks, Shikotsu-Toya and Daisetsuzan, have been heavily degraded due to intensive use.

Figure 3(b): Map of Hokkaido's national parks

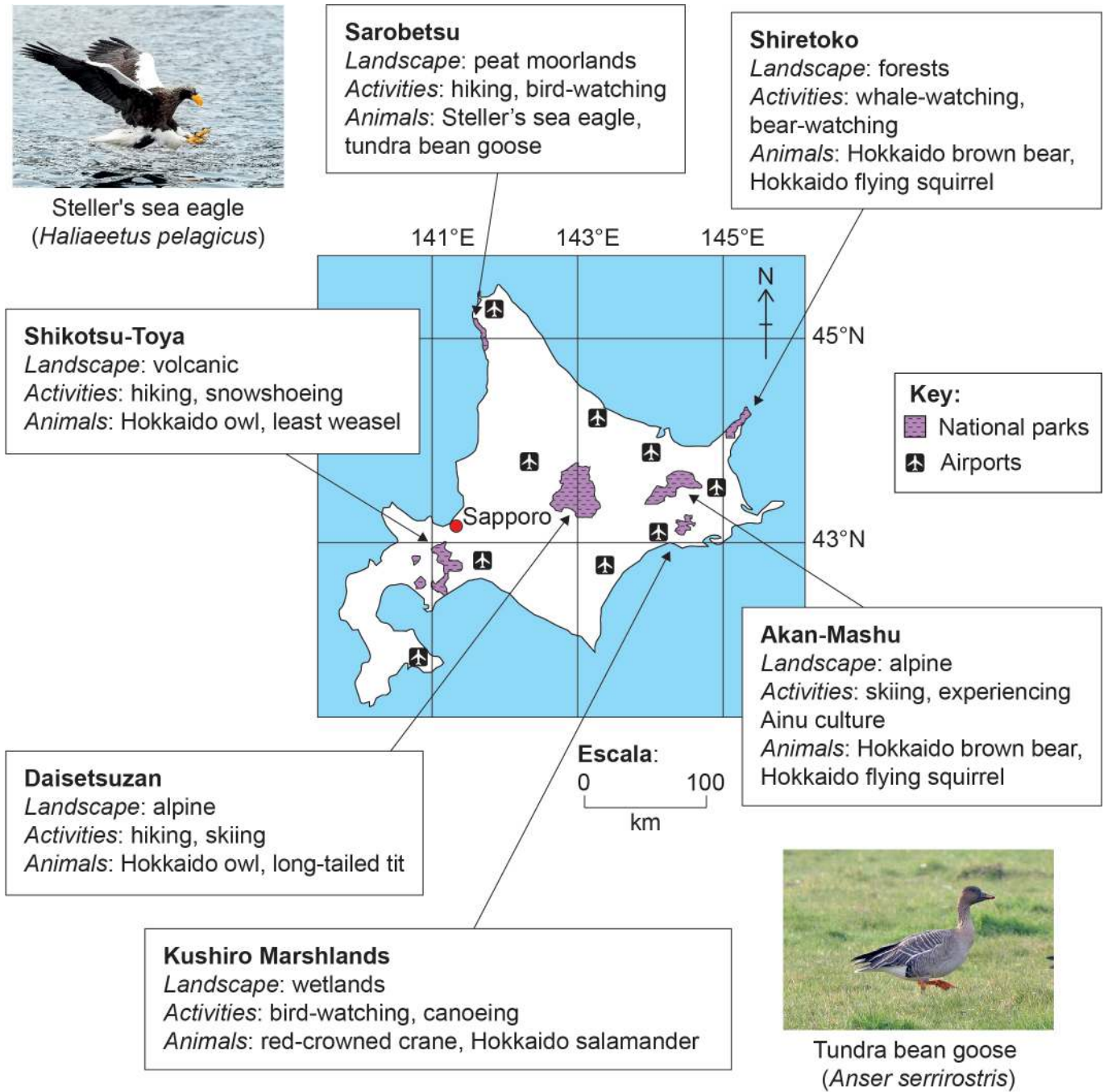


Figure 4: International tourist arrivals to Hokkaido

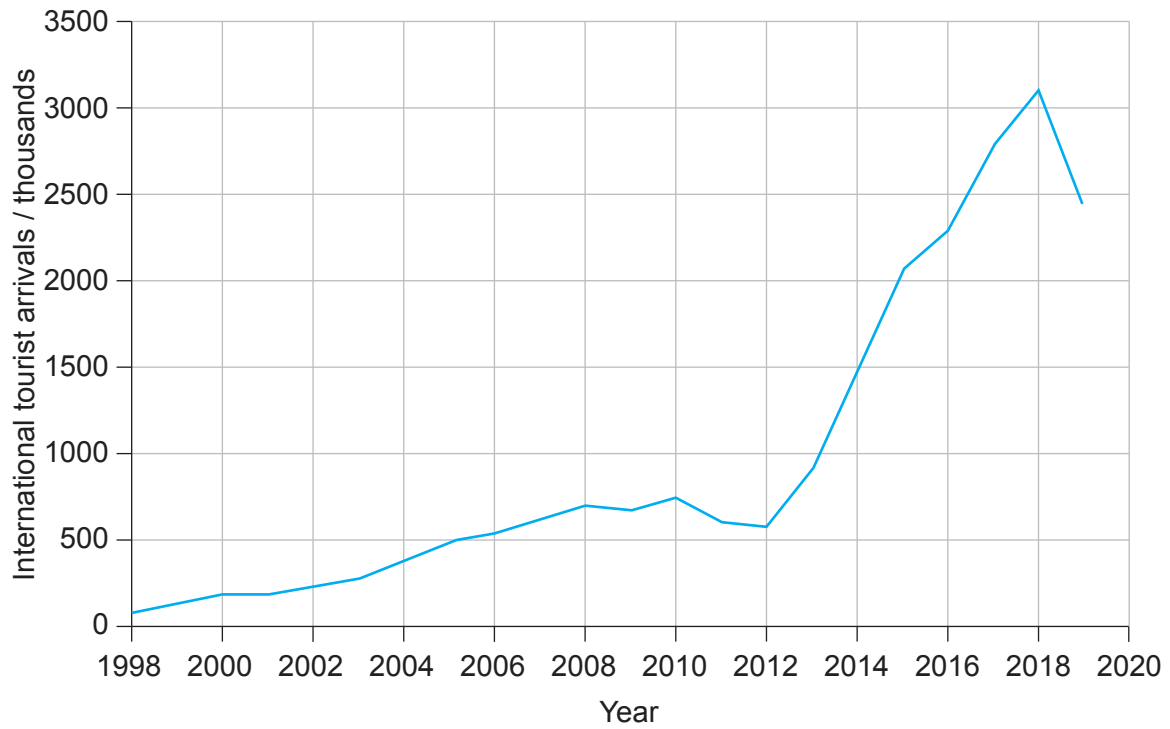
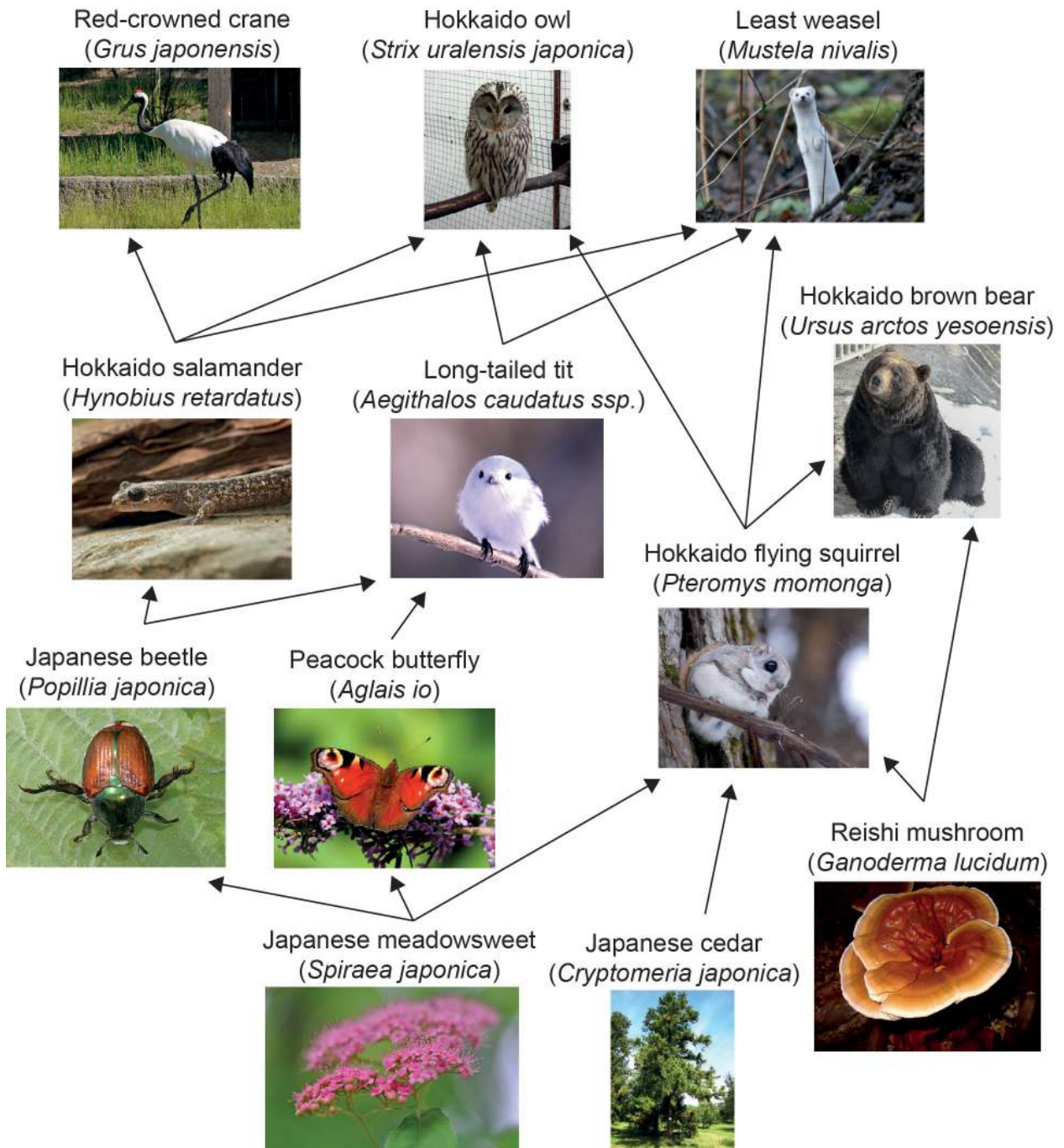


Figure 5: A simplified food web on Hokkaido



Turn over

Figure 6(a): Fact file on red-crowned cranes

- In 2000, the IUCN listed red-crowned cranes as Endangered.
- In 2020, the IUCN made a recommendation to change their status from Endangered to Vulnerable.
- 50% of the world's population is found on Hokkaido.
- Breeding in captivity has been unsuccessful.
- They are protected from hunting across their entire habitat.
- Habitat loss has occurred because wetlands have been drained for agriculture.
- They feed on fish, frogs and salamanders in wetlands, and cereal crops and insects in agricultural areas.
- They are considered pests by some farmers as they eat cereal crops.
- The Kushiro Marshland National Park workers provide additional food in winter.
 - Winter feeding stations in the park are overcrowded.
- On Hokkaido, red-crowned cranes have stopped migrating and have become permanent residents.
 - The resident population on Hokkaido has lower genetic variability than the migratory Eurasian population.

Figure 6(b): Population graph of mature red-crowned cranes

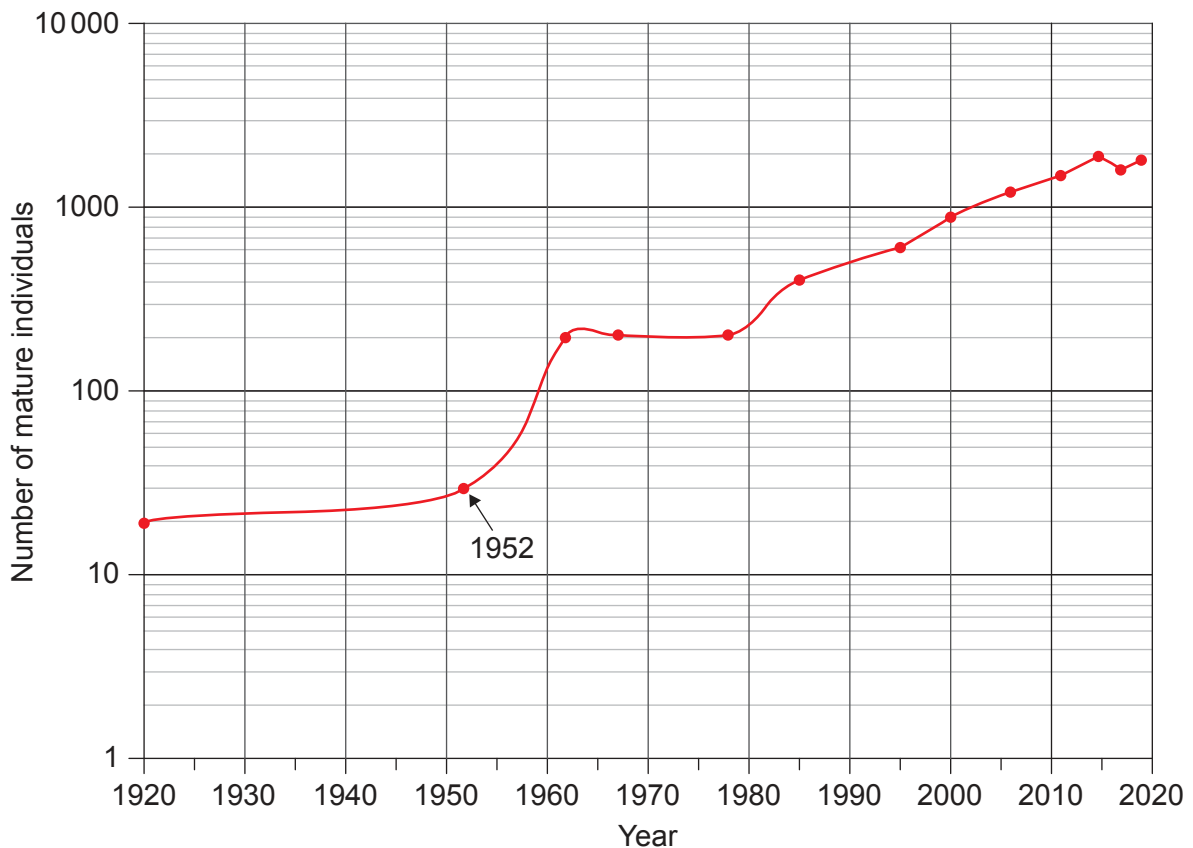


Figure 7(a): Fact file on Hokkaido's forests

- Since the 1950s, natural forests have been replaced by coniferous forest monocultures.
- 71 % of the land area is forest.
- 30% of the forest area in Hokkaido is coniferous forest monoculture.
- In 2006, a plan was proposed to return one third of coniferous forest monocultures to natural forests or grasslands:
 - to protect biodiversity,
 - to protect aquatic recharge areas,
 - to improve recreational opportunities.

Figure 7(b): Natural forests and coniferous forest monocultures in Japan

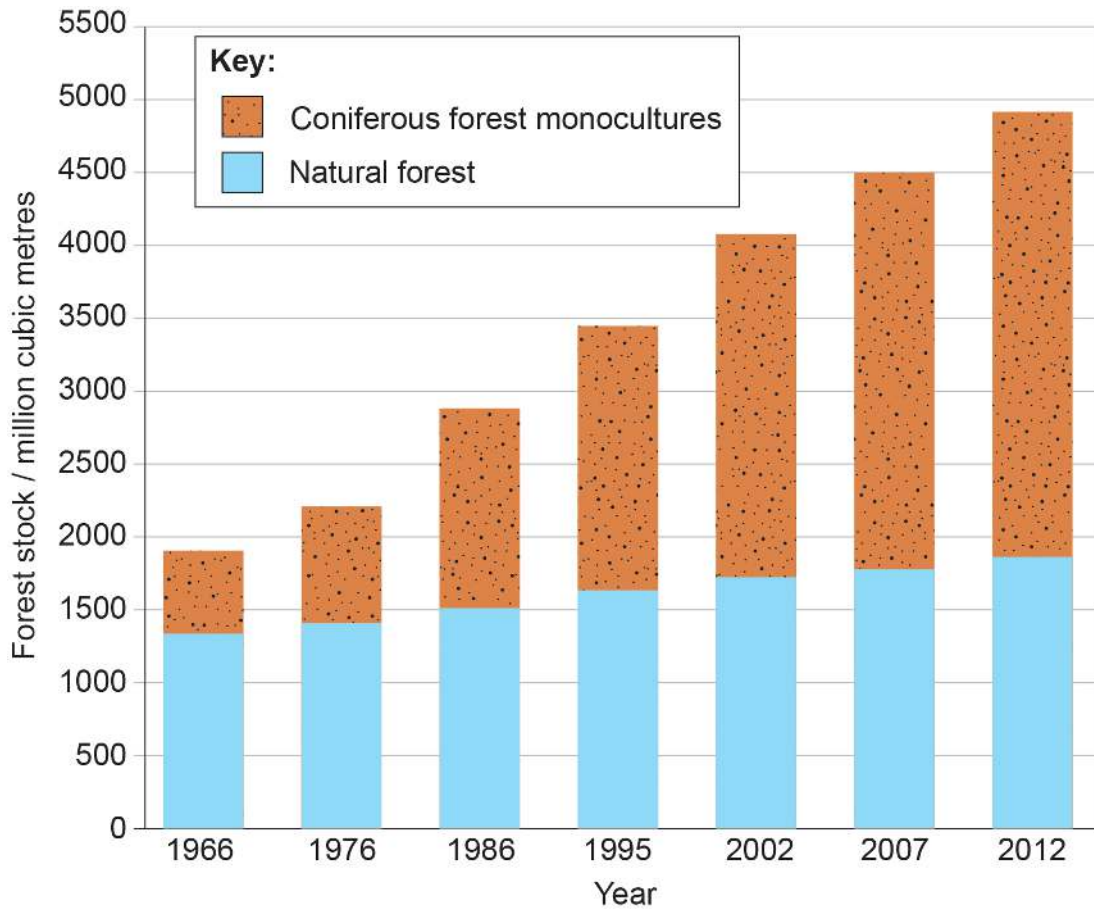


Figure 8(a): Demographic data for Japan and Hokkaido (2018)

Region	Fertility rate (live births per woman)	Birth rate (births per thousand)	Death rate (deaths per thousand)
Japan	1.40	7.39	10.97
Hokkaido	1.28	6.21	12.22

Figure 8(b): Age-gender pyramid for Hokkaido (2018)

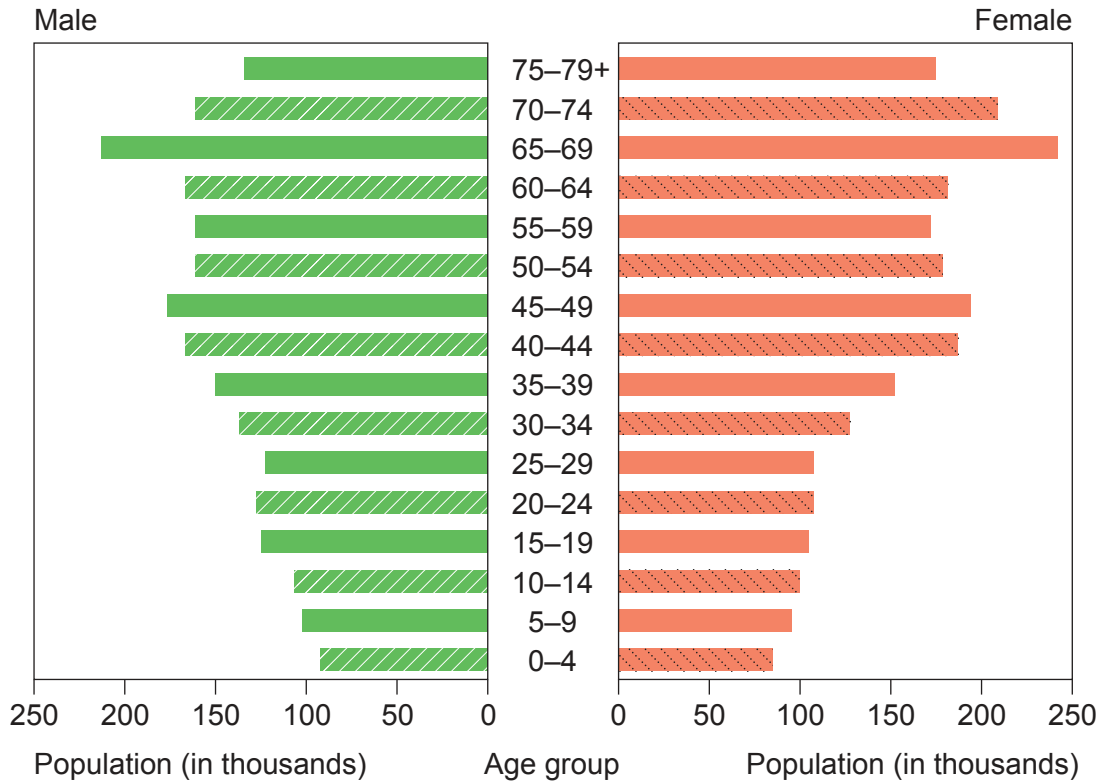
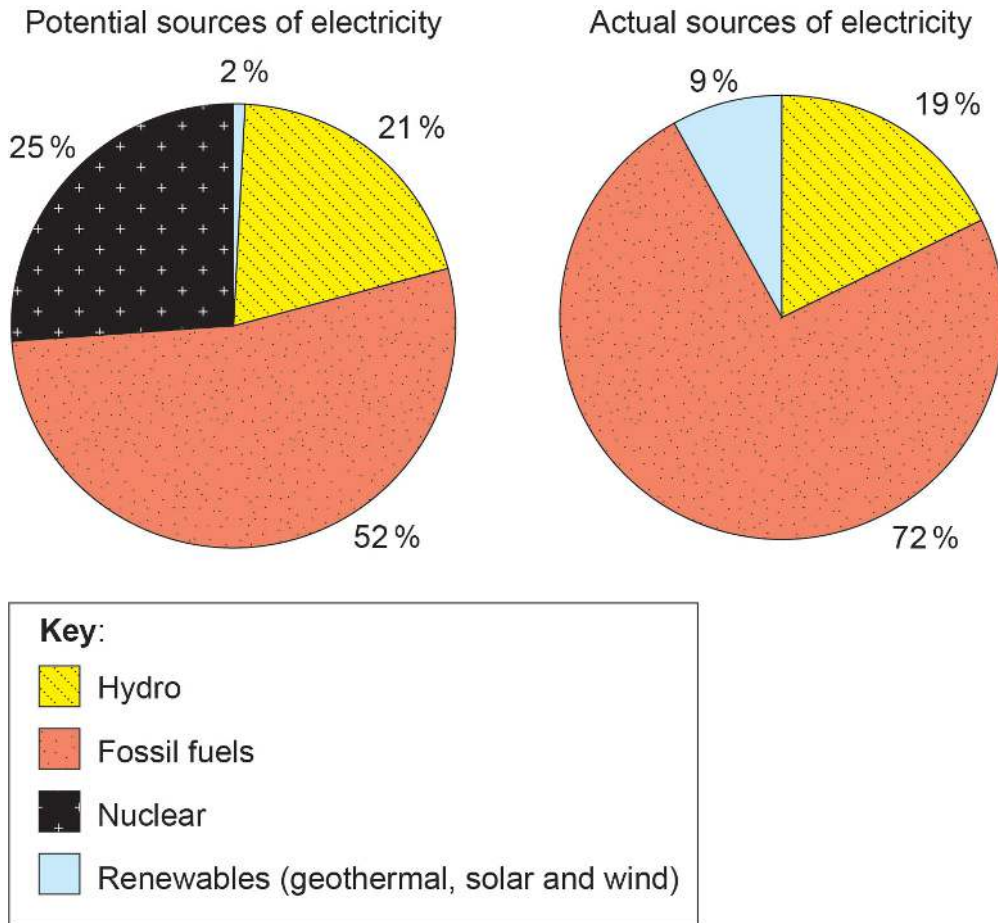


Figure 9(a): Fact file on Japan's energy

- Japan aims to reduce CO₂ emissions by 26 % by 2030 to meet its Paris Agreement targets.
- Japan is resource-poor in terms of fossil fuels.
- Japan imports 94 % of the energy it needs.
- All potential hydroelectric sites have already been developed.
- All future developments for electricity generation require an Environmental Impact Assessment (EIA).

Figure 9(b): Sources of Hokkaido's electricity in 2017



Disclaimer:

Content used in IB assessments is taken from authentic, third-party sources. The views expressed within them belong to their individual authors and/or publishers and do not necessarily reflect the views of the IB.

References:

- Figure 2(c)** Fig 1. Sampling location of Hokkaido salamanders. From: *Population Structure and Evolution after Speciation of the Hokkaido Salamander*. © 2016 Matsunami et al. Under copyright and licensed under the Creative Commons Attribution 4.0 International license. <https://creativecommons.org/licenses/by/4.0/>. Image cropped, recoloured and reannotated.
- Figure 3(b)** Map from Cedars Communication Co. Ltd., n.d. Hokkaido for 10,000 Yen! [image online] <https://uu-nippon.com/hokkaido/air/timetable/index.shtml> [Accessed 13 September 2020].
- Adult Steller's sea eagle fishing. Image by Julie Edgley. https://commons.wikimedia.org/wiki/File:Adult_Steller%27s_sea_eagle_fishing.jpg. Under copyright and licensed under the Creative Commons Attribution-Share Alike 4.0 Generic license. <https://creativecommons.org/licenses/by-sa/4.0/deed.en>.
- Tundra Bean Goose. Image by Ron Knight. https://commons.wikimedia.org/wiki/File:Tundra_Bean_Goose.jpg. Under copyright and licensed under the Creative Commons Attribution 2.0 Generic license. <https://creativecommons.org/licenses/by/2.0/deed.en>.
- Figure 4** This information uses open data from Hokkaido. Hokkaido Tourist Statistics Data: www.pref.hokkaido.lg.jp/kz/kkd/. Hokkaido Open Data CC-BY 4.0. <https://creativecommons.org/licenses/by/4.0/>. [Accessed 3 September 2020].
- Figure 5** Red-crowned crane. Image by Ryan Poplin. <https://www.flickr.com/photos/poplinre/611664347/>. Under copyright and licensed under the Creative Commons Attribution-ShareAlike 2.0 Generic license. <https://creativecommons.org/licenses/by/2.0/deed.en>.
- Ural Owl. Image by Chris Gladis. <https://www.flickr.com/photos/mshades/484853400>. Under copyright and licensed under the Creative Commons Attribution-NoDerivs 2.0 Generic license. <https://creativecommons.org/licenses/by-nd/2.0/>.
- Mustela winter. Image by Stormbringer76. https://commons.wikimedia.org/wiki/File:Mustela_winter.jpg. Under copyright and licensed under the Creative Commons Attribution-ShareAlike 3.0 Unported license. <https://creativecommons.org/licenses/by-sa/3.0/deed.en>.
- Wirestock / iStock.
- kata716 / iStock.

Ussuri Brown Bear Noboribetsu. Image by bryan.... https://commons.wikimedia.org/wiki/File:Ussuri_Brown_Bear_Noboribetsu_2019.png. Under copyright and licensed under the Creative Commons Attribution 2.0 Generic license. <https://creativecommons.org/licenses/by/2.0/deed.en>.

Japanese Beetle - *Popillia japonica*, Julie Metz Wetlands, Woodbridge, Virginia. Image by Judy Gallagher. <https://www.flickr.com/photos/52450054@N04/7339722206>. Under copyright and licensed under the Creative Commons Attribution 2.0 Generic license. <https://creativecommons.org/licenses/by/2.0/deed.en>.

Peacock Butterfly. Image by Airwolfhound. <https://www.flickr.com/photos/24874528@N04/9381126545>. Under copyright and licensed under the Creative Commons Attribution-ShareAlike 2.0 Generic license. <https://creativecommons.org/licenses/by/2.0/deed.en>.

Wiki-ezomomonga1. Image by Tokumi. <https://commons.wikimedia.org/wiki/File:Wiki-ezomomonga1.jpg>. [Accessed 4 October 2020].

<https://www.flickr.com/photos/121131556@N06/19345862096/>.

Cryptomeria japonica tree. Image by Matthieu Sontag. https://commons.wikimedia.org/wiki/File:Cryptomeria_japonica_tree.jpg. Under copyright and licensed under the Creative Commons Attribution-ShareAlike 3.0 Unported license. <https://creativecommons.org/licenses/by-sa/3.0/deed.en>.

Reishi Mushroom. Image by Wendell Smith. <https://www.flickr.com/photos/wendellsmith/16805561088>. Under copyright and licensed under the Creative Commons Attribution 2.0 Generic license. <https://creativecommons.org/licenses/by/2.0/>.

Figure 7b Created by International Baccalaureate Organization based on *Annual Report on Forest and Forestry in Japan* (Ministry of Agriculture, Forestry and Fisheries) (<https://www.maff.go.jp/e/data/publish/attach/pdf/index-95.pdf>).

Figure 8a Table data created by the International Baccalaureate Organization using statistics from the Portal Site of Official Statistics of Japan website (<https://www.e-stat.go.jp/>)—System of Social and Demographic Statistics Prefectural Data Basic Data (for 2018)—under Creative Commons Attribution License 4.0. <https://creativecommons.org/licenses/by/4.0/>. [Accessed 13 August 2020].

Figure 8b Graph created by the International Baccalaureate Organization using statistics from the Portal Site of Official Statistics of Japan website (<https://www.e-stat.go.jp/>)—System of Social and Demographic Statistics Prefectural Data Basic Data (for 2018)—under Creative Commons Attribution License 4.0. <https://creativecommons.org/licenses/by/4.0/>. [Accessed 13 August 2020].

All other texts, graphics and illustrations © International Baccalaureate Organization 2022